

ProdPump Sanitary High Pressure Pump

Sanitary transfer of production sample of fluid with Pressure

Unique Benefits

- **Energy efficient:** Half energy loss of the most homogenizers
- **Small:** Integrated design deliver the light weight and small dimensions
- **Smart:** Programming control systems confer diligent and foolproof functions
- **Silent:** Noiseless performance with high energy efficiency
- **Strong:** More than 200L/hr
- **CE compliant and RoHs compliant**

Piston Dual Pump/Flow controllable



ProdPump series electric sanitary high pressure pump is an equipment operated with the touch screen and controlled intelligently by program. It can be used for industry production preparation of fat emulsion, liposome, nanosuspension, lipid microsphere, nanoemulsions, dairy products, infusion solutions, cell disruption, juice homogeneity, fine chemical engineering, dye and etc. The maximum working pressure is 20,000 Psi/1500 Bar. All parts touching with medium are FDA approved sanitary materials including 316L stainless steel, 17-4ph stainless steel, titanium alloy, tungsten carbide, PTFE, UHMWPE.

Specifications

Catalog No.	ProdPump-1500	ProdPump-1000	ProdPump-800	ProdPump-500	ProdPump-300
Flow rate	80L/hr	100L/hr	120L/hr	180L/hr	200L/hr
Min. Sample	200mL	200mL	200mL	400mL	400mL
Max. Pressure	1500bar	1000bar	800bar	500bar	300bar
Dimensions (cm)	140×70×40	140×70×40	140×70×40	140×70×40	140×70×40
Weight (kg)	~200	~200	~200	~200	~200
Max. Temp.	80°C (176°F)				
Power	380V/440V				
Cleaning	CIP/SIP/Flush to clean				
Features	Digital display of pressure or sanitary pressure gauge				



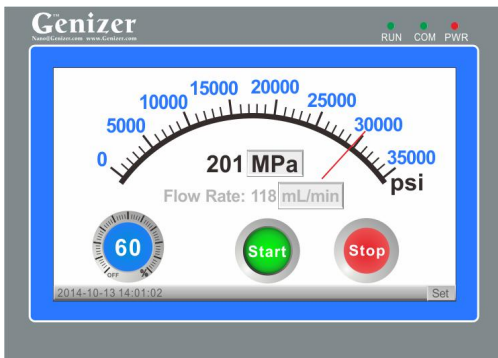
Phone: +1(323) 825-1851
Fax : +1(323) 978-4693
Email: Nano@Genizer.com
http://www.genizer.com/producepump_p0032.html

Discount available for public research. Genizer.com reserves the right to change specifications without notice. © 2009 by Genizer. All rights reserved. English Version 091620.

ProdPump Sanitary High Pressure Pump



ProdPump

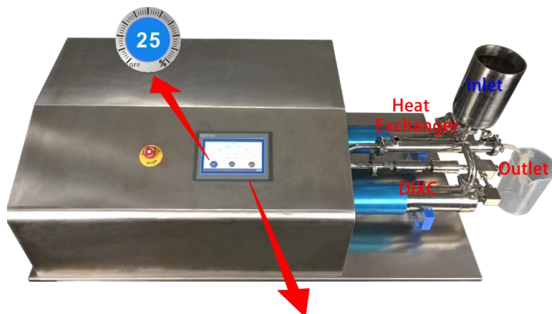


Foolproof Control

3 Steps for running the Product Pump

Step 2: Adjust the Speed from Low to High

Step 1: Sample from Inlet



Step 3: Press the Start or Stop

Standard Features

Parts	1 set of Diamond interaction chamber
Control System	High pressure programming control systems®: Touch Screen, Speed control, Auto stop control by volume, time, pressure or temperature, settable volume control as low as 20mL, display of flow rate and time, overload protection
Pressure Gauge	Electric
Inlet type	2" Tri-Clamp
Outlet type	2" Tri-Clamp
Feed Reservoir	Online, 1000mL SUS316 Cylinder
Collector Reservoir	Online, 1000mL SUS316 Cylinder
Product material	316L stainless steel, Tungsten Carbide, Viton, Teflon, UHMWPE
Material standard	Pharmaceutical Grade, FDA & GMP approvable
Warranty	1 year against any manufacturing defects

Available Option

Parts	Liposome Extruders, Homogenizing valves - Two stages, Heat Exchanger
Cooling System	Sanitary Heat Exchanger (HPE350 or HPE450)
Detector	Pressure gauge, Pressure and Temp. transducer
Inlet/Outlet type	Luer or 1" or 2" Triclamp or 3/8" High pressure coupling
Inlet Reservoir	1L, 2L stainless steel open reservoir; 2L, 5L pressurized tank; Online or Tank
Outlet Reservoir	
Cylinder	Titanium High pressure Cylinder (Resistant to strong acid and base)